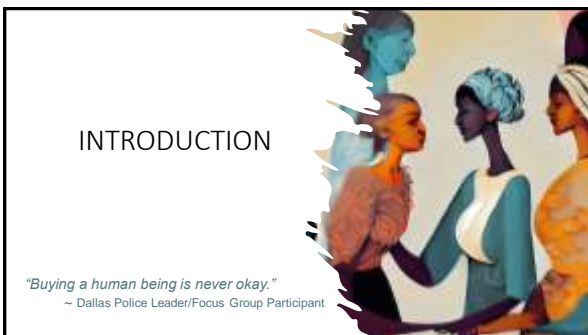




1



2



3

Project Background

- Project proposed in 2021
 - Sex trafficking needs assessment Dallas County
- Partnerships: DPD & IUPR
 - DPD Units: Vice, ICAC, HRV, Community Engagement
- Project timeline
 - October 2021: Project Launch
- Adaption of timeline and methods during COVID

- Ride-along & non-profit facility tours
- Community awareness campaign
 - Social media outreach & communication
 - UNIDOS



4



<https://www.unodc.org/handbook/human-trafficking/for.html>

5



Representative Figure from the Global Slavery Index Report 2023

6

Impact of COVID



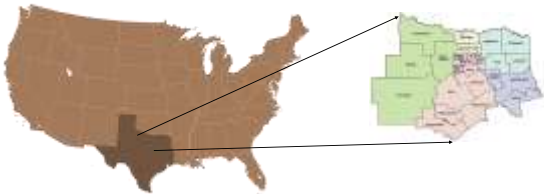
7

Modern Slavery in the Americas



8


Texas & North Texas Region



9


OVERVIEW OF DATA COLLECTION METHODOLOGIES

"Traffickers step in the fractured moments of discontent. When [an individual is] thirsty, a drop of water is everything."
- Provider/Focus Group Participant



10

Survey Methodologies



11

Focus Groups & Focused Interviews


Faith-Based	<ul style="list-style-type: none">• Our Calling• Community Symposium
Service Providers/Non-profit Partners	<ul style="list-style-type: none">• Focus Groups + Key Informant Interviews• Advocacy Focused Target Interviews
Survivors	<ul style="list-style-type: none">• Focused One-on-One Interviews
Law Enforcement	<ul style="list-style-type: none">• Focus Groups• Key Informant Interviews
Dallas Police Citizen's Police Academy	<ul style="list-style-type: none">• Specialized Training
Prosecution	<ul style="list-style-type: none">• Key Informant Interviews

12

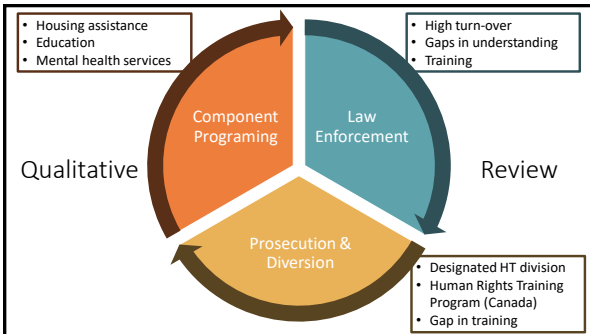
"Not having basic needs met will send someone back to the streets."
 ~ Survivor/Focus Group Participant

FINDINGS

"If I don't have anywhere to sleep, I can't dream."
 ~ Survivor/Focus Group Participant



13



14

Major Barriers

- Improper application of bail terms for human trafficking suspects.
- Difficulty maintaining relationships between prosecution staff and victims.
- Lack of protections for human trafficking victims in criminal prosecutions.
- Re-traumatization by un- or undertrained service providers.

15

Barriers: "No Man's Land" – 17 year olds



16

Respondents: Race/Ethnicity & Gender

Race/Ethnicity	Number	Percent	Gender	Number	Percent
American Indian or Alaska Native	3	0.5%	Female	202	39.4%
Asian or Pacific Islander	39	6.9%	Male	311	60.6%
Black/African American	40	7.1%	Non-binary/Third Gender	0	0.0%
Hispanic/Latinx	110	19.4%	Prefer Not to Say	0	0.0%
White/Caucasian	313	55.3%	No Response	53	
Two or More Races	61	10.8%	Total	566	
No Response	0				
Total	566				

17

Respondents: Age Group & Home Type

Age Group	Number	Percent	Home Type	Number	Percent
18-24	39	7.3%	Apartment	94	19.4%
25-34	84	15.8%	Condo	23	4.7%
35-44	94	17.7%	House	341	70.3%
45-54	95	17.9%	Mobile Home	6	1.2%
55-64	106	20.0%	Other	6	1.2%
65-74	91	17.1%	Townhome/Duplex	15	3.1%
75 & Over	22	4.1%	No Response	81	
No Response	35		Total	566	
Total	566				

18

Respondents: ZIP Code of Residence & Work/School



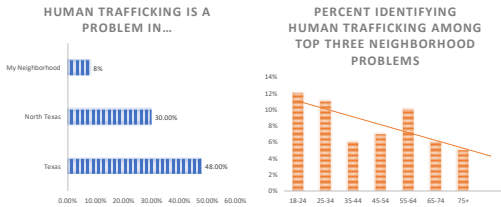
Number of Respondents by ZIP Code of Residence



Number of Respondents by ZIP Code of Work/School

19

Perceptions About Human Trafficking



20



21



22

LIMITATIONS

"Trafficking starts with one person's vulnerability and another person's vice."
- Focus Group Participant

23

Response Bias **Pandemic Response Interruptions**

Limitations in Accessing Vulnerable Populations


Leadership Turnover in Law Enforcement **City of Dallas Ransomware Attack**

24

"Healed women heal families; healed families heal communities."
 - Survivor/Focus Group Participant

CONCLUSION

"It's hard to be restorative when the system is punitive."
 - Member of the DA's Office/Focus Group Participant



25

Recommendations / Next Steps

Address Staffing Shortages	Promote Stability Among Supervisory & Line Staff	Assess Organizational Alignment of Key Programmatic Elements
Identify & Embrace Efficiencies in Specialty Services	Enhance Multidisciplinary Collaboration & Information Sharing	Embrace a Coordinated Community Response Model
Implement an Integrated Investigation & Interdiction Model	Implement Tailored Awareness & Education Campaigns	Support Aftercare & Reintegration Programs

26



27
