



The People are Coming!
The People are Coming!
Implications of Population Growth for
*Capacity, Configuration, Character, and
Culture of Care and Condition*

Dr. Timothy M. Bray



The Institute for
Urban Policy Research
at The University of Texas at Dallas

5,615,565

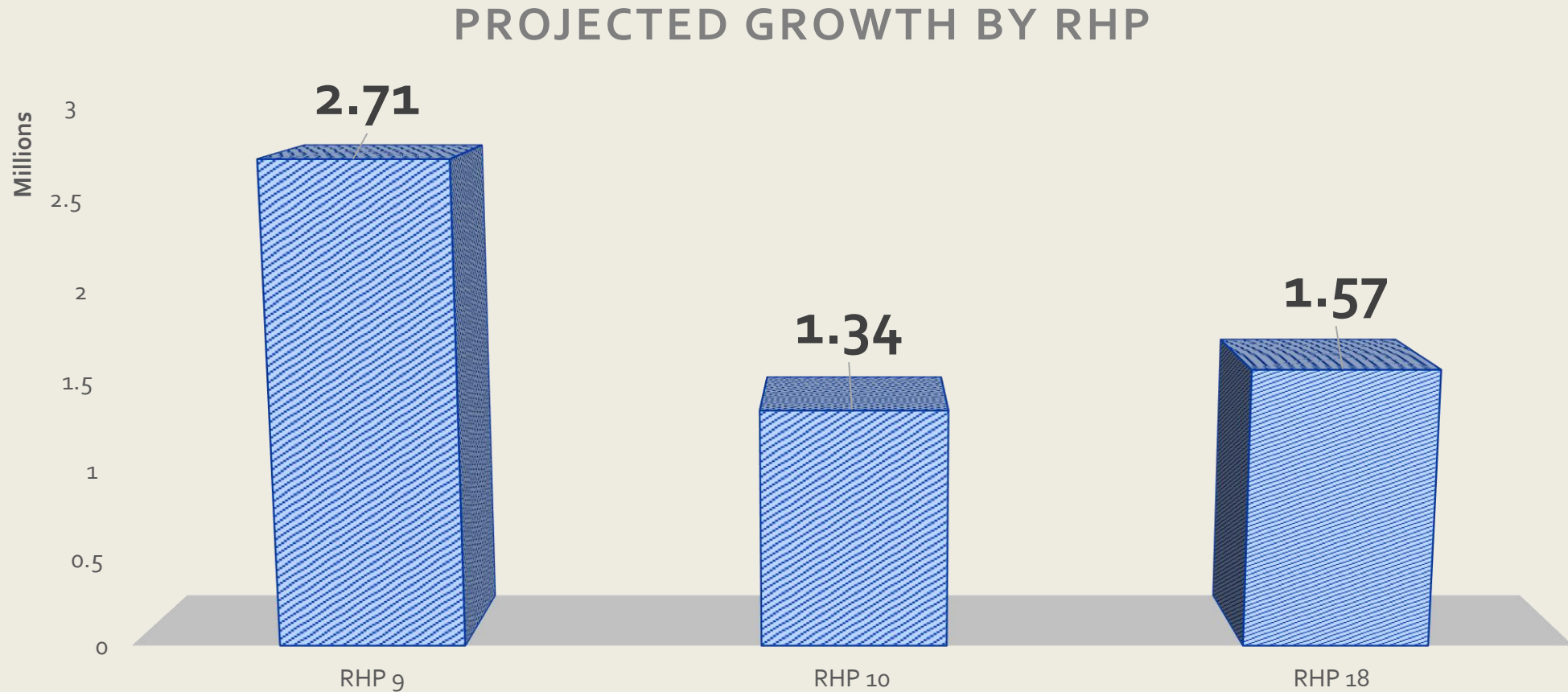
Predicted Growth by 2050

7,739,792

Already Here in 2019



Projected Growth by 2050, by RHP



Source: IUPR Analysis of Texas Demographer 2018 Population Projections

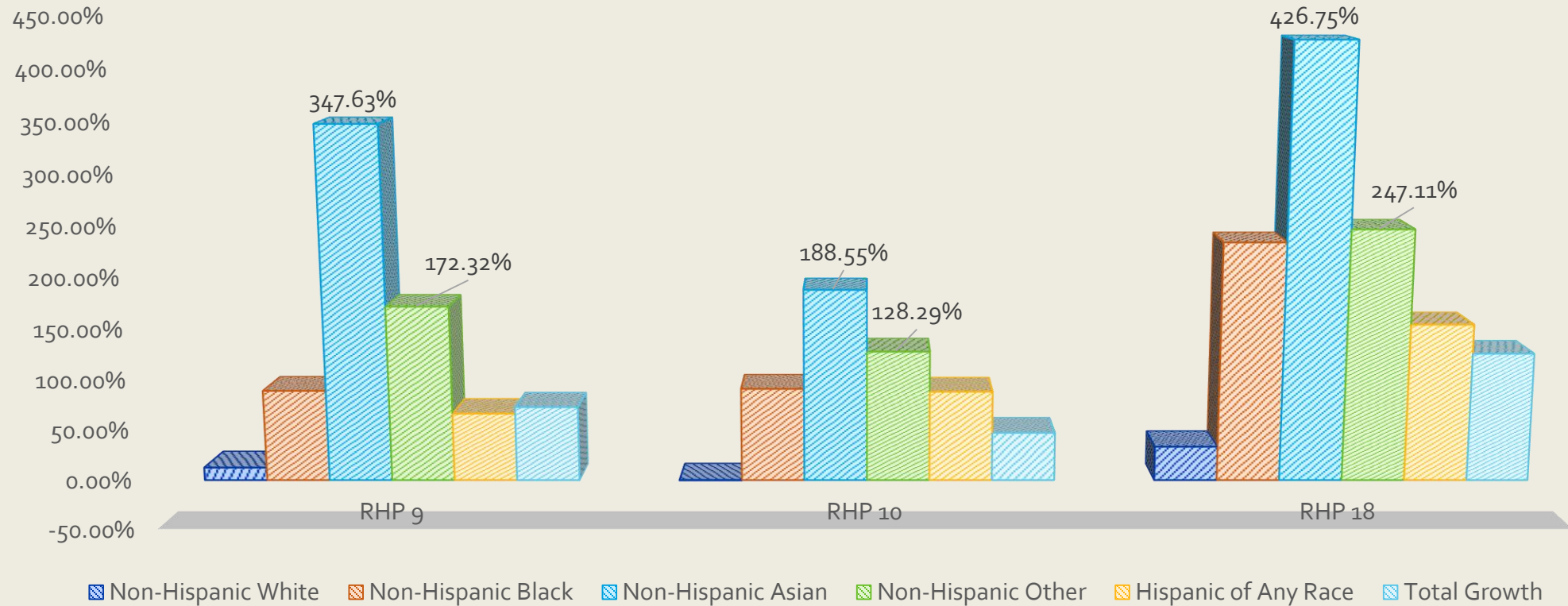


Capacity



Growth by Race and Ethnicity

RELATIVE GROWTH BY RACE AND ETHNICITY

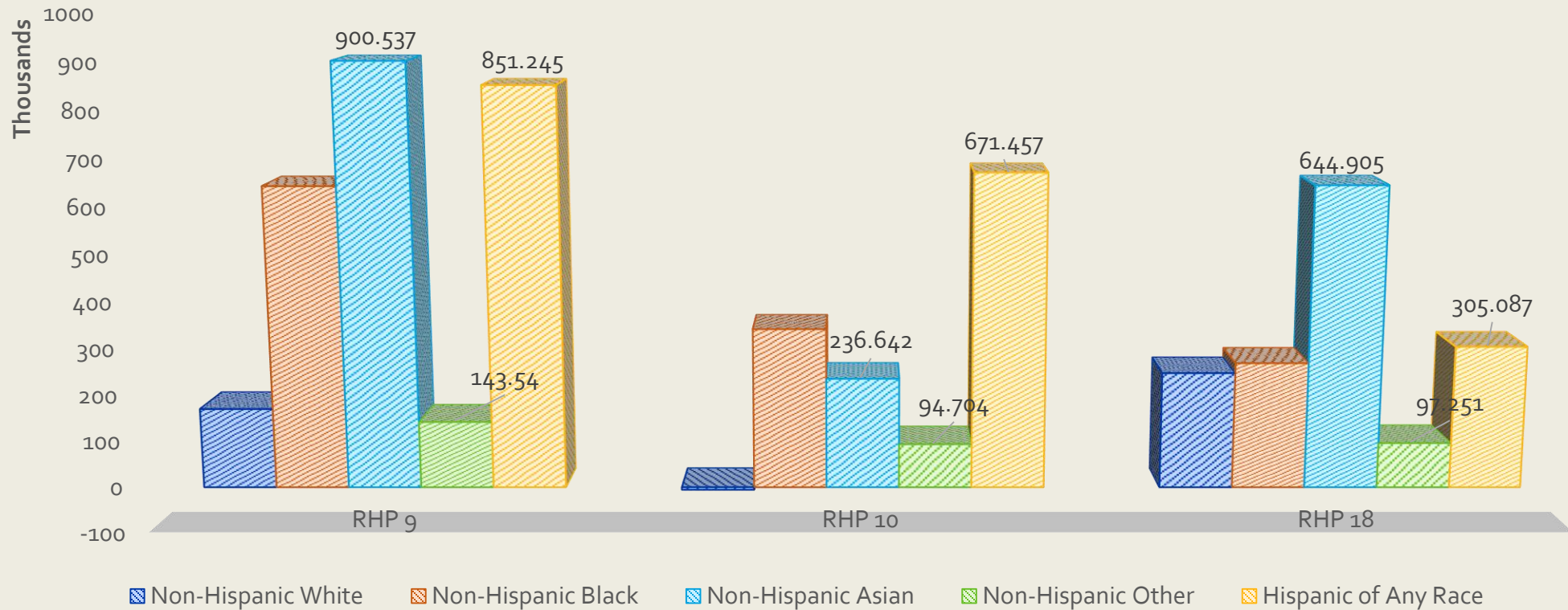


Source: IUPR Analysis of Texas Demographer 2018 Population Projections



Growth by Race and Ethnicity

ABSOLUTE GROWTH BY RACE AND ETHNICITY

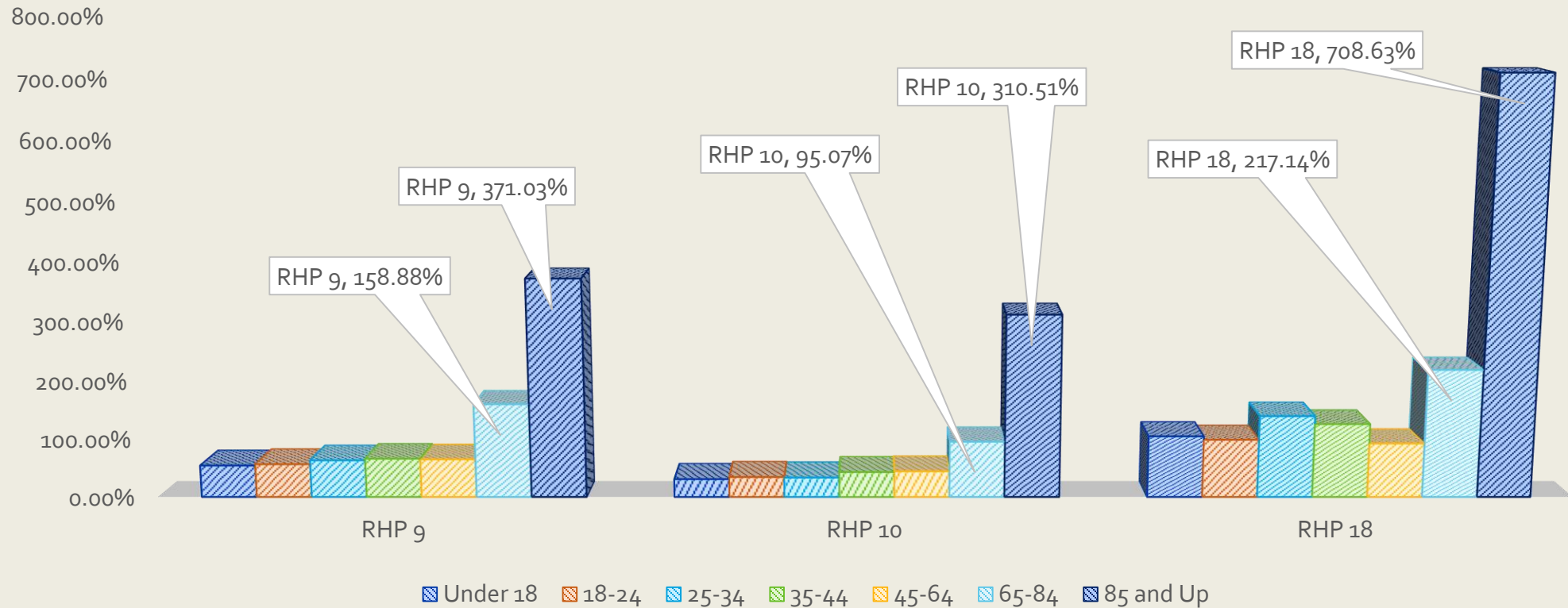


Source: IUPR Analysis of Texas Demographer 2018 Population Projections



Growth by Age Group

RELATIVE GROWTH BY AGE GROUP

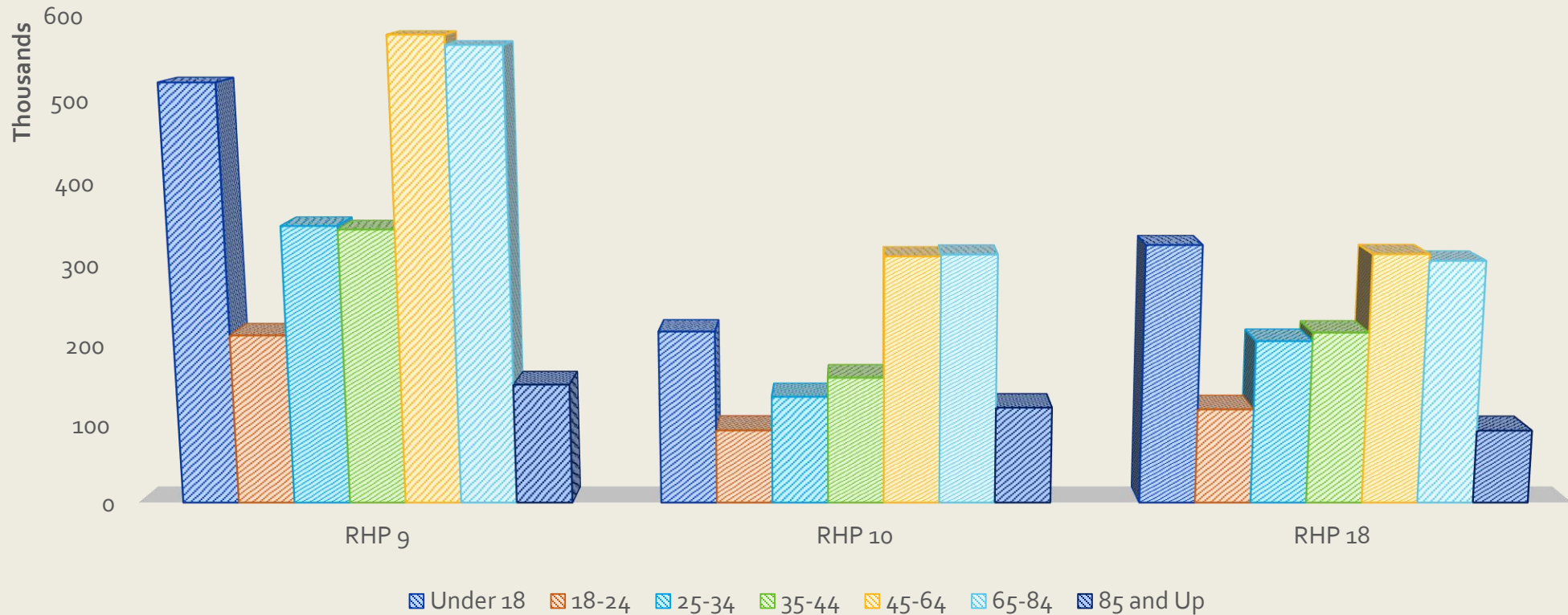


Source: IUPR Analysis of Texas Demographer 2018 Population Projections



Growth by Age Group

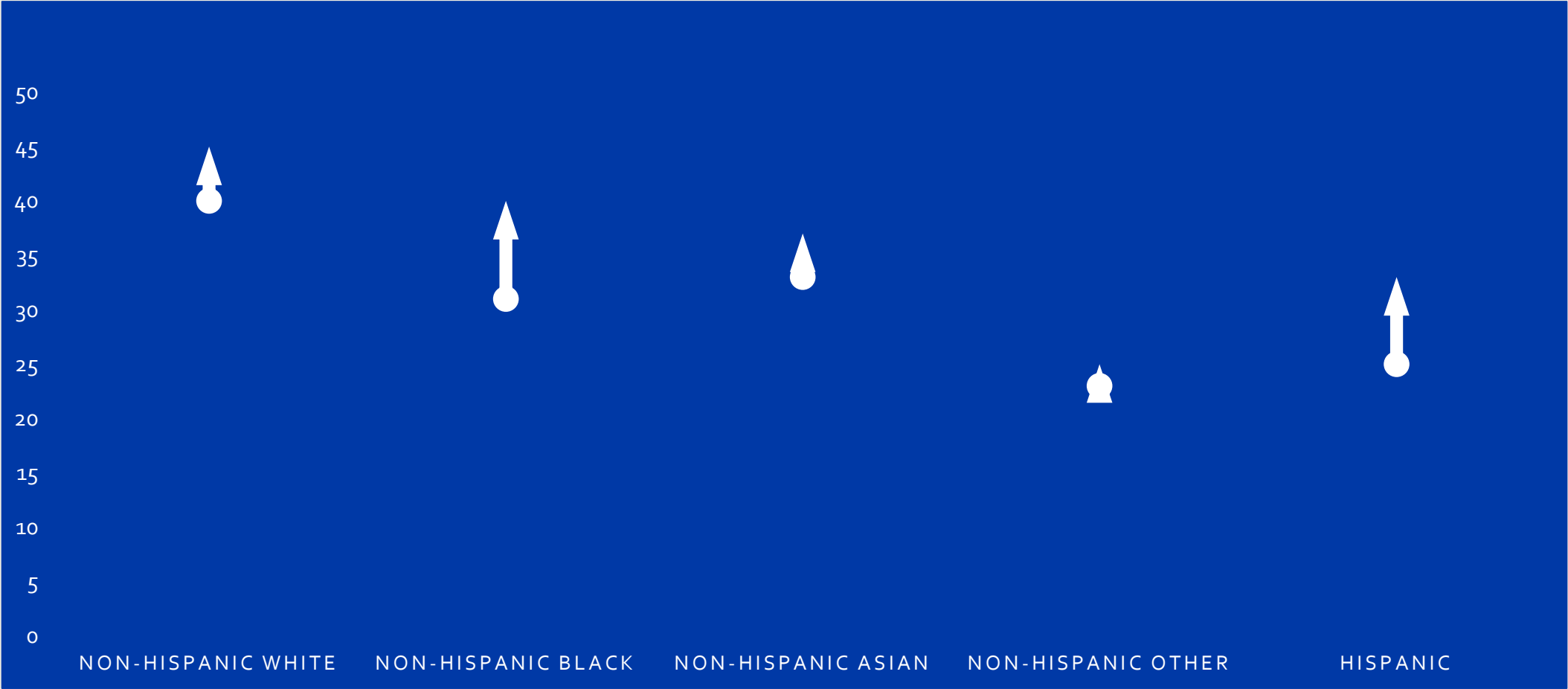
ABSOLUTE GROWTH BY AGE GROUP



Source: IUPR Analysis of Texas Demographer 2018 Population Projections



Change in Median Age by Race and Ethnicity, 2010-2050

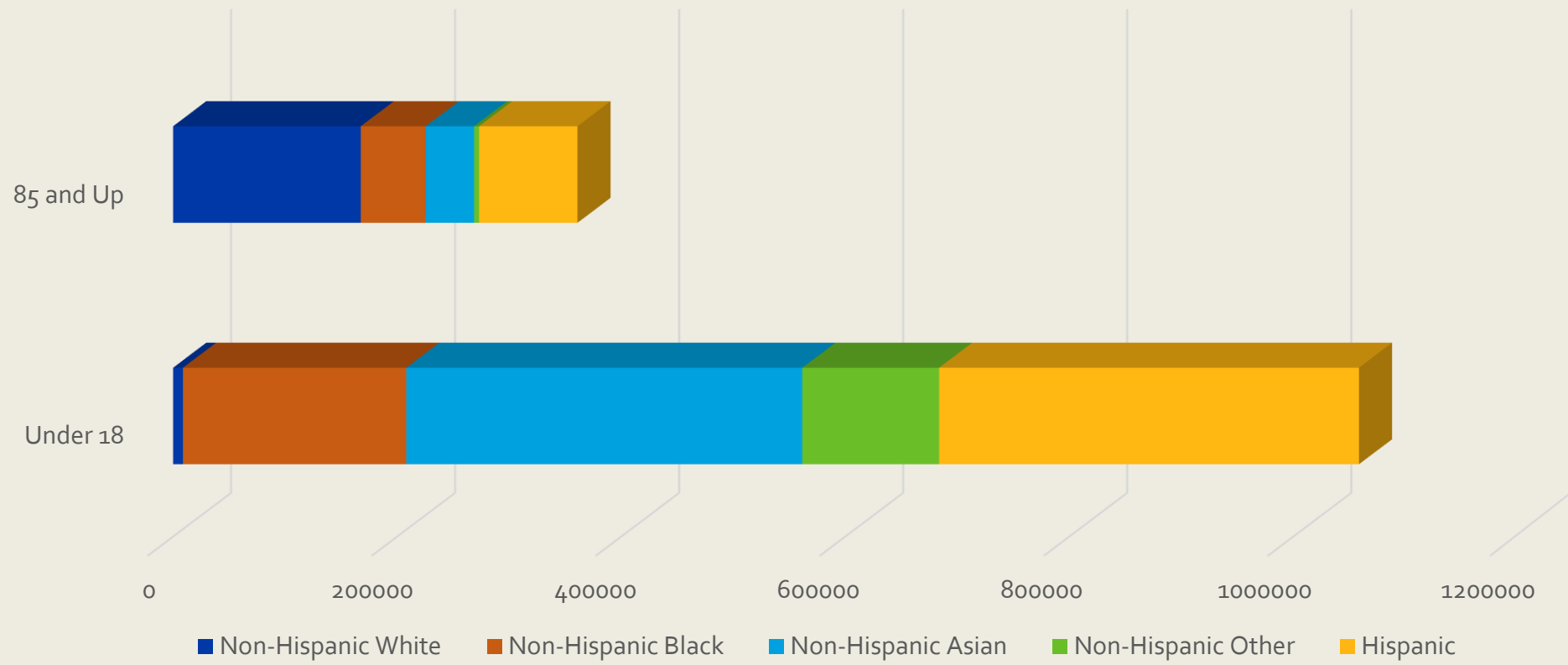


Source: IUPR Analysis of Texas Demographer 2018 Population Projections



Racial and Ethnic Composition of Population Differential by Age Group, 2019-2050

Chart Title



Source: IUPR Analysis of Texas Demographer 2018 Population Projections



Configuration

Character

Culture



Implications for Consideration

Culture

Governance

Urban Form
and Structure

Education

Workforce
Development

Income and
Poverty

Healthcare

Housing

Transportation

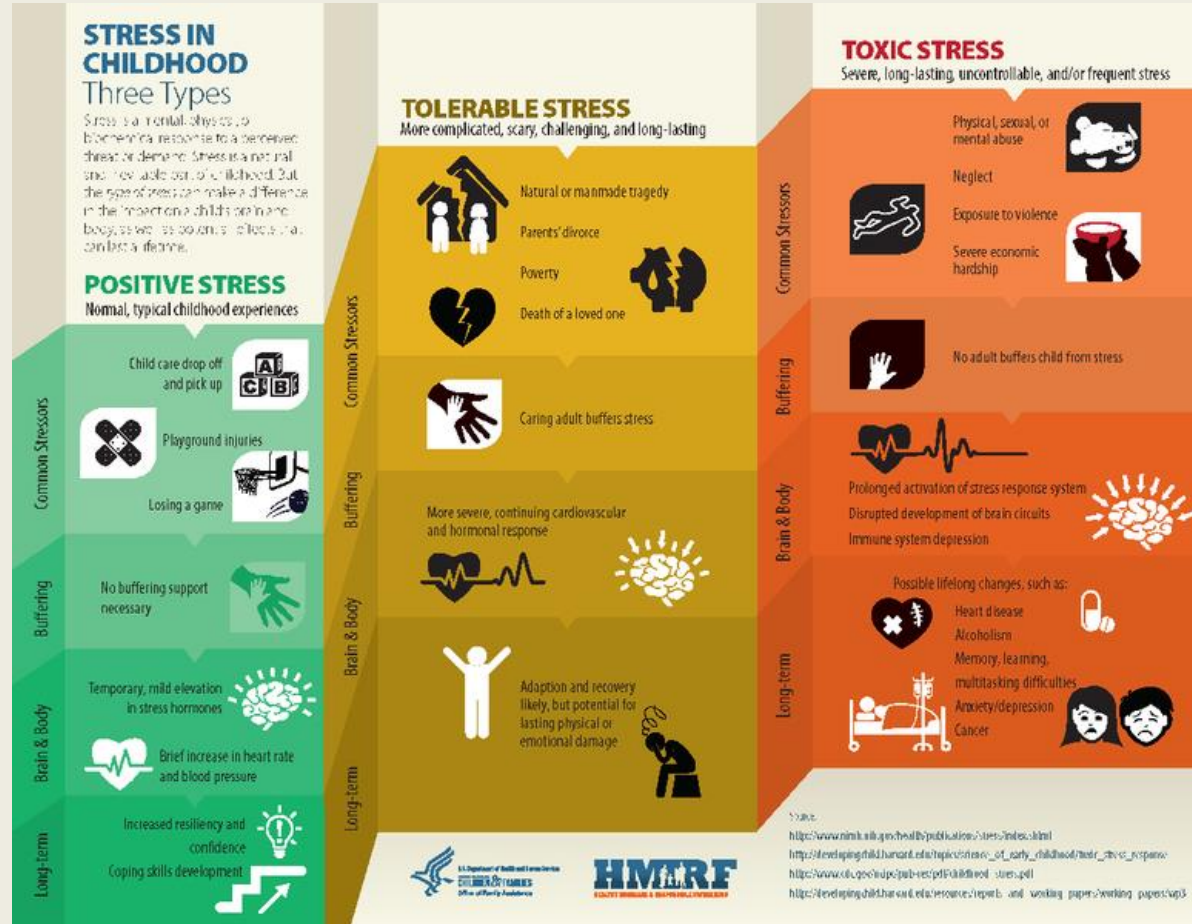




An Example: Adverse Childhood Experiences and Toxic Stress



Why Should We Care?



Measuring Toxic Stress



Housing Distress



Overcrowding



Poverty



Un-employment



Transportation



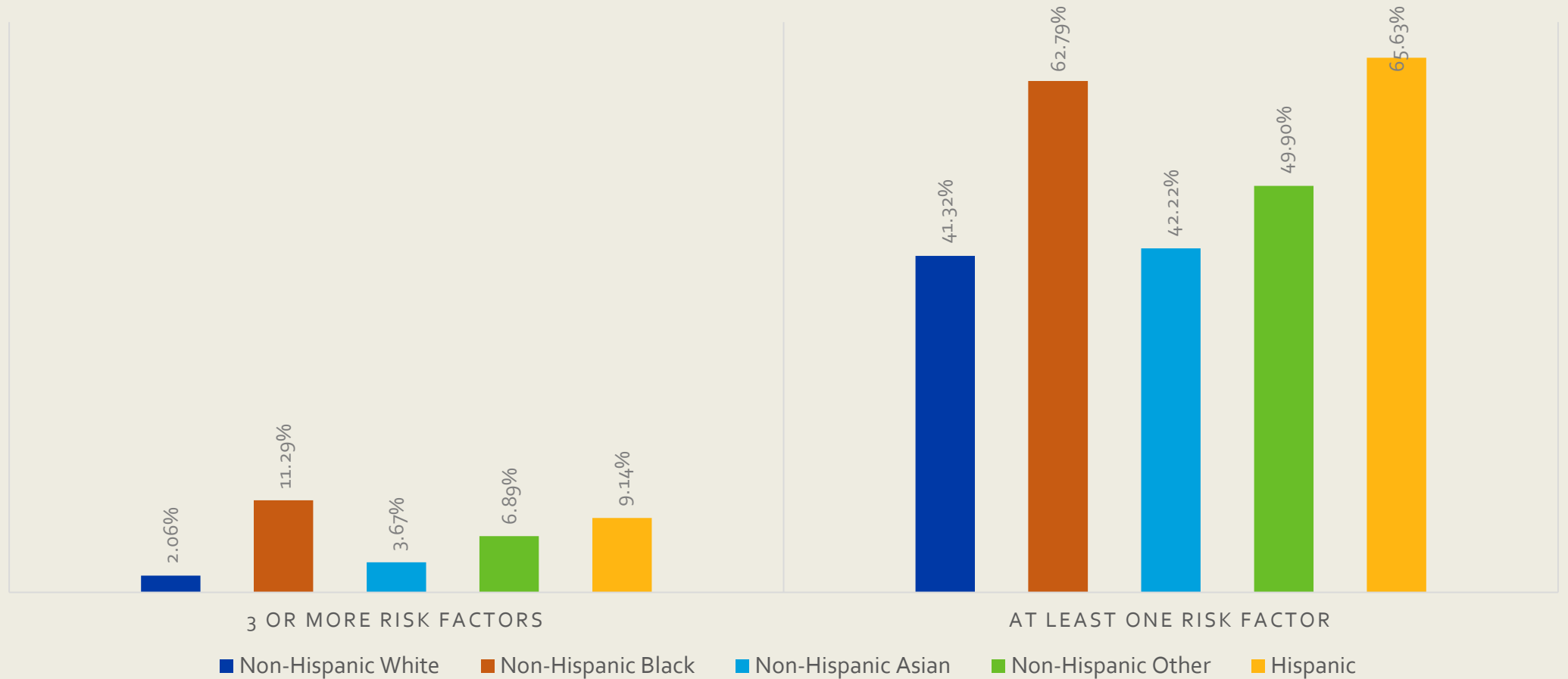
Health Insurance



Single Parent Households



Risk of Toxic Stress by Race and Ethnicity, RHP 9, 10, and 18 2017



For More Information

Dr. Timothy M. Bray

Institute for Urban Policy Research
The University of Texas at Dallas

800 West Campbell Road, WT20
Richardson, Texas 75080

V: 972-883-5430

F: 972-883-5431

timothy.bray@utdallas.edu

<http://iupr.utdallas.edu>



@timothy_bray



SlideShare www.slideshare.net/TimothyBray

